

Seedling

Winter 2023

SEEDLING SALE ORDER FORM INSIDE

**Swatara Floodplain Restoration
Project pix**

Tick checking even in winter

Celebrate Squirrel Appreciation Day

**Penn State Extension offers Forest Webinar
presentation on Wildlife Adaptations**



PEOPLE • CONSERVATION • RESOURCES





Jenna St. Clair, District Manager

I probably say this every year in January, but 2023 is promising to hold some big and exciting things for the Conservation District. This will be my 10th year here at the District and I continue to be amazed by how consistent yet changing our work is year to year.

The resolution to form Schuylkill County as a Conservation District in 1955 was based in the conservation of soil resources and prevention of soil erosion in agriculture, which continues to this day. It has expanded in agriculture and all natural resources in ways that couldn't be imagined in 1955.

Even when I started in 2013, many of the resource improvement projects we are undertaking now seemed too big, too daunting, too complicated, too expensive. I can't praise the conservation district staff enough for their abil-



Jenna and family meeting with Governor Wolf and Secretary of Ag Russell Redding at a recent PA Preferred Dinner.

ity to piece by piece, partner by partner, bring these projects to life.

I recently received a copy of our founding resolution and have included it for those that like to reflect on history.

I welcome your thoughts, ideas, concerns, and questions about the Schuylkill Conservation District and can be reached at (570)622-3742 x3335 or at jstclair@co.schuylkill.pa.us.

A RESOLUTION.

WHEREAS, by the Act of May 15, 1945, P.L. 547, it has been declared that the policy of the Commonwealth of Pennsylvania is to provide for the conservation of its soil and soil resources, for the control and prevention of soil erosion and thereby preserve its natural resources; assist in the control of floods, prevent impairment of dams and reservoirs; preserve wildlife, prevent tax waste; protect public lands; preserve and promote the health, safety and general welfare of the people of the Commonwealth; and

WHEREAS, the conservation of soil resources and control and prevention of soil erosion are problems of public concern in the County of Schuylkill; and

WHEREAS, James Shadle, R. D. #2, Hegins, Pennsylvania, Sam Dohner, R. D. #1, Schuylkill Haven, Pennsylvania, Harold Fortna, R. D. #1, Pine Grove, Pennsylvania, Elroy Baker, superintendent of vocational education for Dauphin and Schuylkill Areas, Berksburg, Pennsylvania, have presented a petition signed by 329 land owners and farmers of Schuylkill County, Pennsylvania, requesting that the Board of County Commissioners declare the County of Schuylkill to be a soil conservation district; and

WHEREAS, the Board of County Commissioners feel that the best interest of the County of Schuylkill will be served by declaring the County of Schuylkill a soil conservation district.

NOW THEREFORE BE IT RESOLVED, that the County of Schuylkill be a soil conservation district for the purpose of effectuating the legislative policy of the Act of May 15, 1945, P.L. 547.

It was moved by Commissioner Elmer McSurdy, seconded by Commissioner John J. Cuff, that the Board of County Commissioners adopt the foregoing resolution.

Motion Carried Unanimously.

Attest:
[Signature]
Chief Clerk.



JFK Walking Trail gets a “tree-mendous” upgrade

The tree identification cards were created by Anna Laughlin, a senior at Blue Mountain High School, with assistance from ‘Porcupine Pat’ McKinney. She is a student intern for “Porcupine Pat” in the first semester of her senior year.

The tree identification cards are located on The JFK Walking Trail in Pottsville, PA. It is a short 0.82 mile walk that is wheelchair accessible, walking, biking, and running friendly. The tree identification cards are a quick and easy way to learn about the tree that stands in front of the post. The cards are split into sections that tell you about the leaves, flowers, bark, and some extra information. They were created by using an online software called *Publisher*. The descriptions were found on Common Trees of Pennsylvania which was created by DCNR.

The time was taken to perfect the descriptions to give the public the easiest but best knowledge of the trees commonly found in our backyard! The identification cards were posted in December of 2022. Touch ups to the post, like new paint and tops made out of Trex, were put on in November of 2022.

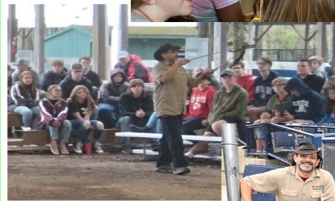




VENOM INSTITUTE

- **Special programs for children and adults with any disabilities and challenges!**
- **Customized programs for in-person school, homeschool groups, scouts, senior citizens, church groups and more!**
- **Conservation education, Rescue & Rehabilitation and Training.**

Providing engaging and informative educational programs about native and exotic reptiles & amphibians for both private and public events.



Contact Rudy Arceo at 484.525.3512 — venominstitute@gmail.com

Plan for Rebuilding and Reopening Red Creek

Red Creek Wildlife Center provides wildlife rehabilitation services to Schuylkill and surrounding counties. The center suffered a devastating fire and a number of animals were lost along with a main building. The community is really coming together to support them. Read on and then provide help too!

A three-phase plan for reopening Red Creek's wildlife rehabilitation can be found here: [Building Project – A New Beginning 2023 \(redcreekwildlifecenter.com\)](https://redcreekwildlifecenter.com) The plan is fluid and changes will be published as they develop.



Everyone at Red Creek Wildlife Center is thankful for the generous donations they have received to help them rebuild. It is because of the love and support that you have shown Red Creek that they can move forward and rebuild.



Red Creek
Wildlife Center
300 Moon Hill Drive
Schuylkill Haven, PA 17972

OUR 31st YEAR!

(570) 739-4393



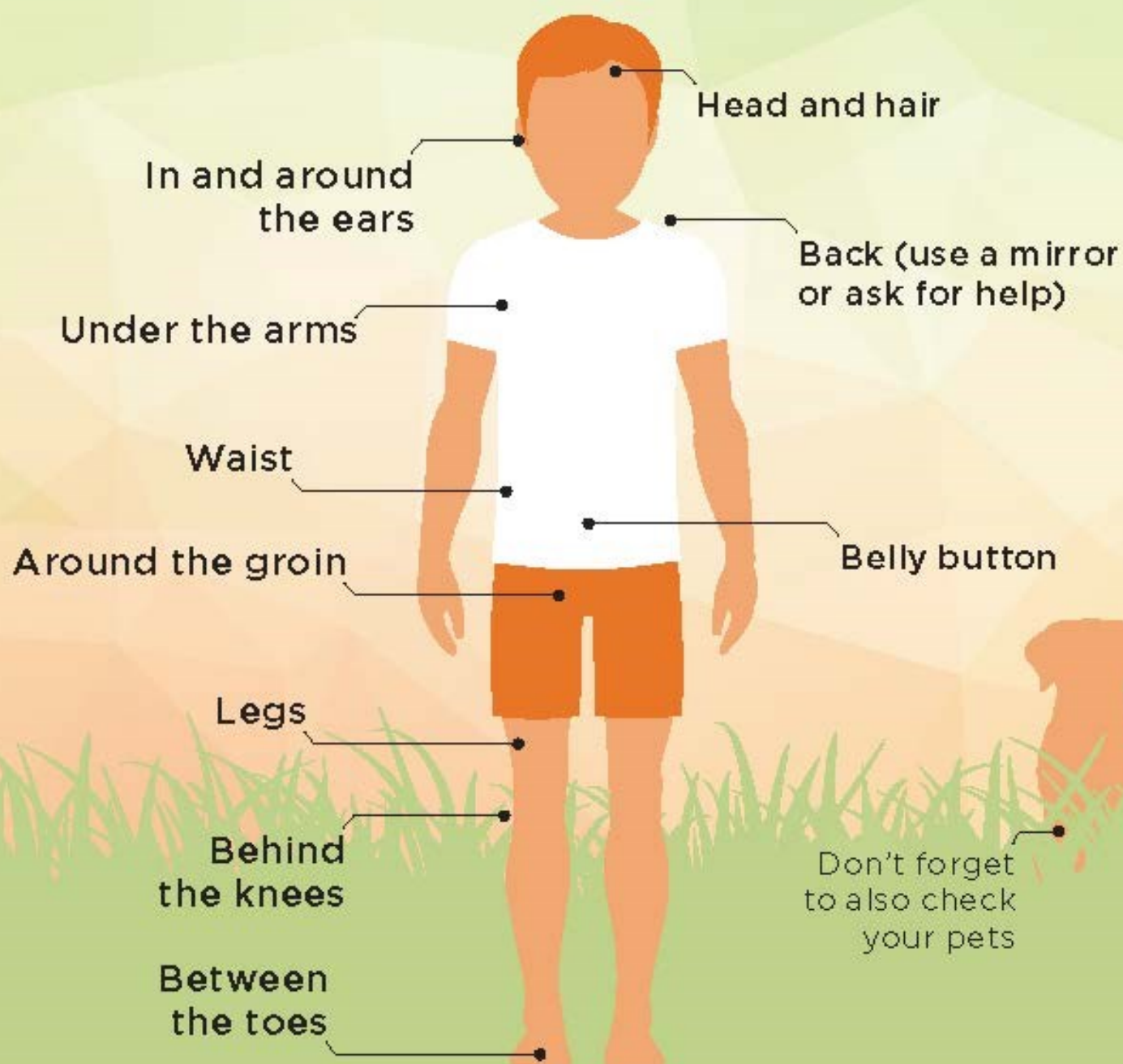
Winter 2023
Page 3

You can still get ticks during the winter. If the temps are over 35 degrees and you walked through tall grass, then chances are you picked up an unwanted rider. Check out this poster and don't forget to check your pets too! — Kyle Schutt, Insect Management Tech.



DO A DAILY TICK CHECK

When you return from outdoor activities, check your entire body, especially:





PennState Extension *presents*

Pennsylvania Forest Webinar: Wildlife Adaptations

Presented on Tuesday, June 13, 2023 at either noon or 7 p.m.

Learn about the wildlife that endures limited resources, extreme weather, and predators. We will also discuss how some species have adjusted to stay alive.

The natural world is a difficult place to survive. During the **Pennsylvania Forest Webinar: Wildlife Adaptations**, you will learn about the animals that face competition for resources, harsh climates, and predators. We will also discuss some species that have adapted in interesting or unusual ways to survive.

This event is being **offered at no charge** to participants, however, if you would like to receive Continuing Education Credits, there may be a fee. If you will be seeking credits for watching this webinar, please select which credits you wish to apply for during registration. In order to receive credits, you must watch the webinar during the live session for which you registered and attend the full session. The time in session will be verified before credits are assigned. A survey must be completed by the registrant immediately after the webinar is completed in order to receive credit.

Credits Available

A fee may be associated with the below credits. See the Fees tab for details.

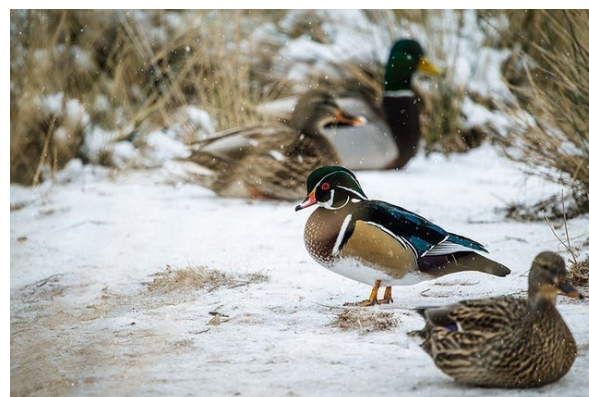
- Society of American Foresters CFE credits (1.0 credit) Category 1-CF
- Sustainable Forestry Initiative CE Credits 1 hour (.25 years) of CE Credit
- State Coordinated Licensed or Registered Forester Credits
- Peer Volunteer/Master Gardener Update Training

Registration is required to receive the link to access the webinar. Registrants will also receive access to the webinar recording.

Who is this for? Forest Landowners, Forestry Professionals and Interested Public

What will you learn?

- The difference between structural, behavioral, and physiological adaptations
- How the process of natural selection works
- Examples of different animal adaptations





Simple Prisms	Solid Columns	Sheaths	Scrolls on Plates	Triangular Forms
Hexagonal Plates	Hollow Columns	Cups	Columns on Plates	12-branched Stars
Stellar Plates	Bullet Rosettes	Capped Columns	Split Plates & Stars	Radiating Plates
Sectorial Plates	Isolated Bullets	Multiply Capped Columns	Skeletal Forms	Radiating Dendrites
Simple Stars	Simple Needles	Capped Bullets	Twin Columns	Irregulars
Stellar Dendrites	Needle Clusters	Double Plates	Arrowhead Twins	Rimed
Fernlike Stellar Dendrites	Crossed Needles	Hollow Plates	Crossed Plates	Graupel

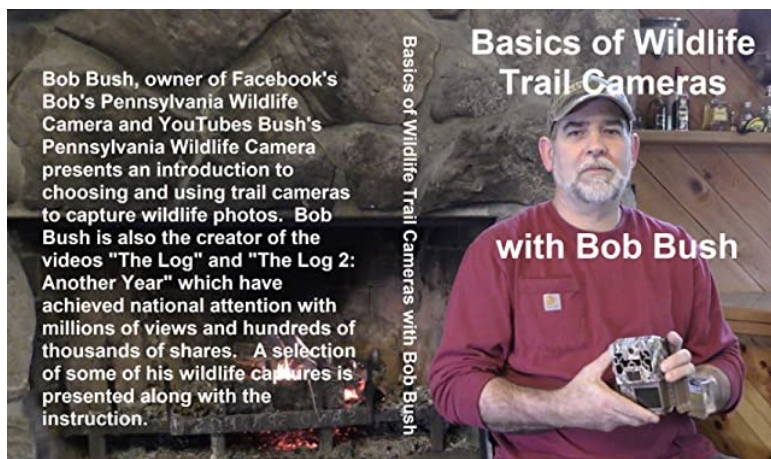
Types of Snowflakes ... SnowCrystals.com



Squirrel Appreciation Day is January 21!
When threatened, squirrels run zigzag!

Relax & Learn via "Bob's Pennsylvania Wildlife Camera"

Bob places outdoor cameras in wildlife hot spots in the woods & then edits the footage for all to enjoy. Discover the diversity of animals in our state. Some of the footage is from PA State Parks!



The Keystone Tree Fund includes a voluntary \$3 check-off box on Pennsylvania driver's license and vehicle registration online applications to buy, plant, and maintain more trees across PA. Click here for more info: [Article \(pa.gov\)](#)



Winter 2023
Page 6

The Swatara Creek Floodplain Restoration Phase #3: Wolfes Road Restoration Project stabilized nearly 5,500 linear feet of streambanks including the creation of wetlands, floodplain, installation of fish habitat structures and planting of riparian trees and shrubs along the Upper Little Swatara Creek upstream of Sweet Arrow Lake County Park near Pine Grove. The stabilization of streambanks (grading the streambanks to a 4:1 slope and planting with native trees and shrubs) along the Upper Little Swatara in the project area will help to reduce sedimentation in Sweet Arrow Lake and the Chesapeake Bay. An additional benefit of this project through the created floodplain, wetlands and riparian areas will also help to reduce flooding downstream.



Virtual Getting Little Feet WET with a MWEE Flair Educator Workshop

Thursday, January 26, 2023, 5:30 pm - 7:30 pm on **Zoom**

Act 48: 2 hrs.

Fee: **FREE!** Pre-registration required

Virtually offered by Carissa Longo, PA State Parks Project WET Coordinator, Megan Fedor, Environmental Education Specialist from Nescopeck State Park, and Dr. Nanette Marcum-Dietrich, Millersville University. Join certified facilitators via Zoom to learn all about and experience Project WET's early childhood curriculum - Getting Little Feet WET (GLFW)! GLFW is a hands-on, standards-based early childhood activity guide that is all about WATER. It features 10 field-tested, interactive activities that utilize art, reading, music, math, and outdoor learning to teach children ages 3-6 about water. Dr. Nanette Marcum-Dietrich of Millersville University will also introduce the MWEE Framework in early childhood education.

This virtual workshop will be interactive, and attendees will get a chance to virtually participate in activities. This workshop is open to classroom teachers, pre-school teachers, non-formal educators, pre-service teachers (college students), homeschool parents, and more.

To be shipped your free GLFW Activity guide, attendees must register by January 11. Those that miss the 1/11/2023 registration deadline will not be guaranteed to receive workshop materials before the training.

Space is limited. Pre-registration is required. [Register NOW!](#) Questions? Contact Carissa Longo, EE Program Coordinator at calongo@pa.gov or 717-772-1807.



Virtual Growing Up Wild Educator Workshop

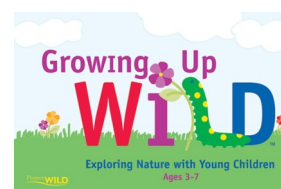
Saturday, January 28, 2023 at 9:00am to 12:00pm

Virtually offered by Presque Isle State Park, 301 Peninsula Drive, Suite 1, Erie, PA 16505

Act 48: 3 hrs.

Fee: **FREE!** pre-registration is required

Educators will receive training on the curriculum *Growing Up Wild: Exploring Nature With Young Children Ages 3-7*. This is a free virtual professional development opportunity for formal and non-formal educators of students in preschool to 3rd grade. Earn 3 Act 48 hours as we explore wildlife and the world around us. Pre-registered attendees will be shipped their own copy of the *Growing Up Wild: Exploring Nature With Young Children Ages 3-7* book. [Register NOW!](#) Questions? Contact Ray Bierbower, EES at edbierbowe@pa.gov or call 814-833-0793.



The above copy comes from a bimonthly environmental education E-Blast. Many great ideas for school, scouts, home and much more. Sign up for this free resource in the box below.



pennsylvania
DEPARTMENT OF CONSERVATION
AND NATURAL RESOURCES

[Sign Up To Receive
This E-Blast](#)



Winter 2023
Page 8



NEWS LEAF

Master Gardeners of Schuylkill County

schuylkillmg@psu.edu

570.622.4225 ext. 23

"From the Greenhouse Column" by Master Gardener Tom Reed

Wintertime in the garden is considered downtime, but is it? There are many things/items that will keep the gardener busy at this time of the year. Here are a few that should make spring a bit easier when we "get back out there."

This is a wonderful time to lay out garden plots, paying particular attention to crop rotation especially in the veggie garden.

If you did not drain fuel out of your power equipment, make sure you run them for a good 20 minutes to prevent gas line and carburetor problems in the spring. Doing this task at least once a month or twice a month should help. Equipment that requires a trip to the shop for maintenance should be done now before the spring rush.

Order your seeds now if you start your own transplant seedlings indoors.

Penn State Extension has numerous webinars and programs at this time of the year. There are various subjects to increase your knowledge in whatever type of gardening you do.

The Schuylkill County Master Gardeners will be hosting an in-person Spring Series on March 18th 9:00 am to 4:00 pm at the Ag Center in Pottsville. There will be six programs including vegetables, invasives, paw paws, and more. Information can be found on the Penn State Website Home Gardening: <https://extension.psu.edu/trees-lawns-and-landscaping/home-gardening> for webinars and upcoming events in our surrounding area.

If you are interested in becoming a Master Gardener, Schuylkill County Master Gardener will be recruiting for a new class beginning in October 2023. There will be an announcement when a "Meet the Master Gardener" information session will be held, usually in April. If you have any questions, contact the Extension Office 570-622-4225 or email tcr142@psu.edu

The Master Gardeners are on WPPA 1360 AM and 105.9 FM first Tuesday of the month with JZ on "Step Up to the Mic" 10:00 -11:00 a.m. with gardening information and upcoming events.

Wishing everyone a successful New Year!!



Feed the birds

In winter the birds appreciate a little extra help with finding food! Fill feeders or hang suet blocks to help them get through. Birds eat bugs and feed on weed seeds during the growing season, so attracting them to your garden year round just makes sense. Check out this [simple 2 ingredient suet cake recipe](#).

Take a Soil Test

Although most people associate soil testing with the spring planting season, [taking a soil test](#) in the winter can actually be beneficial. For one thing, it can give you a head start on crafting your garden plan for the following year.



Listen to Master Gardeners on WPPA AM 1360 or 105.9 FM at 10 a.m. on the first Tuesday of each month year round.



Winter 2023
Page 11



48th Annual Seedling Sale

to benefit Sweet Arrow Lake County Park



Your seedlings will increase property value, enhance wildlife habitat, beautify the landscape, improve the environment, and can provide a source of income. *Thanks for your support of the lake!*

WHITE PINE: Great ornamental or Christmas tree with soft, long blue-green needles. Excellent for wildlife cover. Likes ordinary soil, average moisture, and full sun. 3 year old seedlings. Size: 6-10."

NORWAY SPRUCE: Fastest growing of all spruces. Develops pyramidal shape and strong graceful branches that are covered with dark green needles. Ideal windbreaker that likes full sun and grows in various soils. Matures at 60 feet and has a beautiful 25 foot spread. 3 year old seedlings. Size: 8-12."

WHITE SPRUCE: A straight, tall tree easily recognized by its needles. Cones always hang down. Beautiful year-round color. Tolerates most soil conditions. Grows to 60'; 15' spread. 3 year old seedlings. Size: 4-8."

RIVER BIRCH: Popular use in the landscape as an ornamental tree due to its beautiful and distinct bark. A medium to fast grower, this tree reaches heights of 70 feet and grows in various soil types. It makes a striking landscape impact when planted in tight groups of three or more. 2 year old seedlings. Size: 24-30."

RED MAPLE: This maple grows at a moderate to rapid rate and does best in bright sun to partial shade. It will grow in a range of soil types from sandy loam to clay. Better soil will result in a better healthier tree. The tree has a pyramidal shape when young. When the tree matures it will attain a larger more rounded crown and will grow to a size of 40-60 feet with a width of 25-45 feet. Leaves turn a brilliant red during fall and accent any yard. 3 year old seedlings. Size: 6-8."

SCARLET OAK: Fast-growing and tolerates a wide range of soils. Leaves are glossy deep green on top, paler green below, and scarlet in fall. Crown is open and rounded, providing light shade. Grows to 60' to 80." 2 year old seedlings. Size: 6-10."

WHITE OAK: Grows 50 to 80 feet. Dense foliage is bluish-green, to reddish-brown in autumn. Grows best in a deep, loamy, well drained soil. Known for their broad, round head and massive, wide spreading branches. An excellent specimen tree needing plenty of room to mature properly. Also the most prolific lumber oak in the Northern Hemisphere. Advantages of white oak are that they are easily transplanted when young and they have a high resistance to ice breakage and oak wilt. Also, a good tolerance of highway salt. They are a long lived tree and require very little maintenance. Native to eastern to mid United States, 2 year old seedlings. Size: 4-8."

WINTERBERRY: This deciduous shrub grows to 6-15 feet tall and often as wide. It develops a rounded habit through suckering, eventually growing into a colony of upright stems. The stems tend to be dark brown and often develop a pleasing gray sheen. The three inch long, elliptic, toothed, and pointed leaves vary from light to dark green, taking a yellow hue in autumn. Offers bright red berries in late summer. The berries remain after leaf fall and persist into the winter months to provide food for wildlife. Winterberry prefers evenly moist, acid soils in full sun to partial shade. 2 year old seedlings. Size: 6-8."

BLACK CHOKEBERRY: A deciduous shrub that features white flowers, black fruits and bold red fall foliage. Can be planted in either full sun or partial shade. You will get the best flowering and fruiting in full sun locations. The fruit can be canned whole or the juice extracted for jelly making as well as a healthful fruit drink. 2 year old seedlings. Size: 10-15."

SILKY DOGWOOD: Deciduous spreading shrub. Multi-stemmed shrub with dense foliage and rounded form. New stems are reddish purple with fine silky hair. Flexible stems will root where they are in contact with the ground. Clusters of small white flowers in spring, followed by blue berries which ripen to black. Flowers attract butterflies. Fruit eaten by many birds. Leaves and twigs browsed by deer and rabbits. One of the more shade tolerant shrubs for moist soil. Used for restoration and ground stabilization because it readily roots from stems. 3 year old seedlings. Size: 15-18."

LILAC: A medium to large hardy shrub with stout, spreading branches developing a somewhat oval to irregularly-rounded crown. The showy flowers are very fragrant and enjoyed each spring. 2 year old seedlings. Size: 6-8."

AMERICAN CRANBERRY: This is an excellent deciduous shrub for screening up to 10 to 12 feet high. It grows to a width of 8 feet with very dense growth of up to 3 feet per year in full sun or part shade. This bush has showy white flowers in spring followed by red berries in fall and winter. Berries hang through mid winter making excellent bird feed. This shrub has very few insect problems and prefers good, well-drained soil. For best growth, provide supplemental water during dry periods. For a solid screen, plant bushes 2 to 3 feet apart. 2 year old seedlings. Size: 12-18."

NEW PICKUP LOCATION AT SWEET ARROW LAKE

Waterfall Rd Pavilion — 48 Waterfall Rd, Pine Grove



48th Annual Seedling Sale Order Form—2023

Proceeds benefit Sweet Arrow Lake County Park



- **ORDER DEADLINE:** Order must be received by **Saturday, March 25, 2023** and will be filled while supplies last! **No order cancellations or refunds after the deadline.** Your purchase directly benefits Sweet Arrow Lake.
- **PICK UP:** Saturday, May 6, 2023 from 9 a.m. to 12 noon for a drive-thru pick up at the Waterfall Road Pavilion.
- **NOTE:** Seedlings are bare root and will be healthy at pick up. No guarantees after this date.
- **INFO:** "Porcupine Pat" at 570.391.3326 or porcupinepat@yahoo.com or Kathy Stefanick at 570.345.4963

Date _____

Name _____

Address _____ City _____ State _____ Zip _____

Phone _____

Please provide email address or phone number for pickup reminder:



NEW PICKUP LOCATION AT WATERFALL RD. PAVILION 48 Waterfall Rd, Pine Grove

ITEM	# PER BUNDLE	# DESIRED	COST/BUNDLE	TOTAL
White Pine	10/bundle		X 15.00 =	
Norway Spruce	10/bundle		X 15.00 =	
White Spruce	10/bundle		X 15.00 =	
River Birch	5/bundle		X 12.00 =	
Red Maple	5/bundle		X 12.00 =	
Scarlet Oak	5/bundle		X 12.00 =	
White Oak	5/bundle		X 12.00 =	
Winterberry	5/bundle		X 12.00 =	
Black Chokeberry	5/bundle		X 12.00 =	
Silky Dogwood	5/bundle		X 12.00 =	
Lilac	5/bundle		X 12.00 =	
American Cranberry	5/bundle		X 12.00 =	
			Total Sale =	
			Please be sure to add 6% sales tax =	
			Grand Total =	

- Please make your check payable to SALCA. Mail check and this form to: SALCA, PO Box 143, Pine Grove, PA 17963. (SALCA stands for Sweet Arrow Lake Conservation Association.)
- For more information about Sweet Arrow Lake County Park: www.sweetarrowlakepark.com

2023 Pennsylvania Association for Environmental Educators (PAEE) Annual Conference ~ *Old Forests, New Lessons: Growing as Educators*

- **March 13 -14, 2023**
- **Act 48 hours provided!**
- **In-Person at [Camp Hebron](#), Halifax, PA**
- **[Register NOW](#) for the Conference**



PAEE Conference Scholarships:

Application Deadline for all scholarships: January 20, 2023!

For Pennsylvania K-12 Classroom Teachers or School Administrators - In partnership with PAEE, Stroud Water Research Center is pleased to announce that **multiple PA K-12 teachers and/or school administrators will be awarded stipends to attend the 2023 Conference**. Stipends are available as part of the professional development and outreach initiatives of the *NOAA funded (Grant #NA17NMF4570274) PA Environmental Literacy Task Force & Meaningful Watershed Educational Experiences (MWEE) Programming Capacity Building project*.

For Environmental Educators (only 2 Scholarships available for EE). Questions? Contact PAEE Administrative Coordinator Stacey Widenhofer at stacey@paeE.net.

Schuylkill Conservation District Board and Staff

BOARD OF DIRECTORS

- District Chair:
Scott Graver
- Vice Chair:
Dennis Daubert
- Directors:
Commissioner Gary Hess
- Stanley Fidler
- Glenn Luckenbill
- Dottie Sterner
- Eric Leiby
- Glenn Hetherington
- Russell Wagner

ASSOCIATE DIRECTORS

- Chris Bentz
- Robert Carl, Jr.
- Frank Zukas
- Mike Begis
- Dr. Aaron Clauser
- Mandy Fitzpatrick



STAFF PHONE EXTENSIONS FOR 570.622.3742

- Jenna St. Clair, District Manager, 3335
- Martie Hetherington, Chesapeake Bay Coordinator, 3328
- "Porcupine Pat" McKinney, Education Coordinator, 3326
- Missy Seigfried, Conservation Fiscal Technician, 3324
- Stephanie Lubinsky, Conservation Program Technician, 3329
- Robert Evanchalk, Assistant Parks and Recreation Supervisor (part time)
- Janelle Wilde, Conservation Program Technician, 3327
- Bill Reichert, Upper Swatara Flood Recovery Manager, 3331
- Wayne Lehman, County Natural Resources Specialist, 3333
- Chloe Mullins, Agricultural Program Coordinator, 3325
- Ryan Michlovsky, Conservation Program Coordinator, 3330
- Vacant, Conservation Program Asst., 3316
- Drew Kline, Parks & Rec. Supervisor, 570-527-2505
- Alexa Smith, Natural Resources Conservationist, 3336
- Kyle Schutt, Insect Management Technician, Cell: 484.331.4499



The Annual Seedling Sale is now underway. Your purchase benefits Sweet Arrow Lake County Park. Look for a flyer inside this issue.



Winter 2023
Page 12