

Seedling

SUMMER 2024

**LAKEFRONT FESTIVAL SUNDAY OCT 13
FROM 11 TO 2 SWEET ARROW LAKE**

FROG HOLLOW DEDICATED

WHERE DO MOSQUITOES LIVE?

**GARDENING IN SUMMER
CHALLENGES**

**PA WILDLIFE
COLORING
BOOK**



**CLICKABLE
VIDEOS**

Editor's Note



“It all boils down to two things, one being a few inches of topsoil and the other is the fact that it rains” is a quote being shared by staff here at the conservation district. Yes, humanity continues to make strident efforts to make living on this “third rock from the sun” livable.

If there is anything that can unify us, you can certainly point to the stewardship of our natural resources. Most are fortunate to have adequate water, soil, sunlight, shelter, open space, food, and air. But, then, there are those where it is challenging to find ample amounts or even clean resources to be available.

Our future is in our young people. We had the opportunity to host two hard-working and diligent students. Hats off to Ryleigh and Koda for your time and talents this summer!

To say the word impressive seems to be an understatement. Both students showed a keen interest in resources and in insuring the sustainability of these resources. The world will be a better place with them in future endeavors as the baton passes from one generation to another. Keep on, keeping on!

Congratulations to the Schuylkill County Fair!



At the 2024 Pennsylvania State Association of County Fairs Convention held earlier this year, our county fair placed in these categories:

1st Place – Scrapbook Cover
3rd Place – Brochure

Special thanks to Linda Wolfe for her work on the scrapbook, and to Gretchen Dingman, Denise Mullins and Dee Boris for their work on the brochure.





SCHUYLKILL CONSERVATION DISTRICT

LAKEFRONT FEST

Celebrate the outdoors in Schuylkill County
at Sweet Arrow Lake County Park



Free Admission
Free Parking

Free Activities & Entertainment
Support Local Food Vendors & Fundraisers

FOLLOW US ON FACEBOOK
WWW.SCHUYLKILLCD.COM



SAVE THE DATE!

Lake Front Fest

Sunday, October 13, 2024

11 a.m. to 2 p.m.

Sweet Arrow Lake County Park



Frog Hollow became the second county park here in Schuylkill County at a dedication ceremony held this past April. This almost 28-acre park is mostly wooded and features a stream, nature trails, an amphitheater and a picnic pavilion.

The Schuylkill County Conservancy is providing assistance with maintenance and programming. In fact, a very successful summer day camp was held in June. For more info on programs: www.ourschuylkill.org



READING EAGLE



REPUBLICAN HERAOD

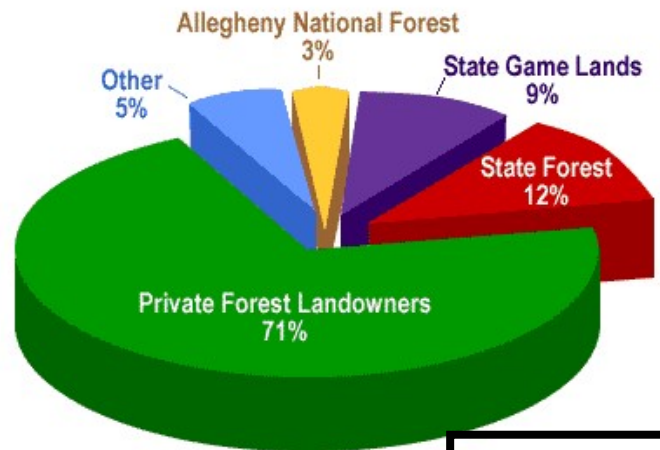


SEEDS



[Shop Smokey Bear - Smokey Bear \(smokeybearbirthday.org\)](http://smokeybearbirthday.org)

Pennsylvania Forest Land Ownership



Keep on top of all the free programs offered by the Schuylkill County Conservancy.

[Schuylkill County Conservancy - Our Calendar & Events \(ourschuylkill.org\)](http://ourschuylkill.org)



This QR code takes you directly to the website of the conservation district.



Where do mosquitoes live?



“Working together, we can help control the mosquito population and then, at the same time, keep West Nile Virus at bay,” Kyle Schutt



Kyle Schutt serves as conservation district Insect Management Technician. Here he is with one of a number of mosquito traps that he has placed in strategic locations within Schuylkill County.

More info on West Nile is found here: [Mosquitoes \(pa.gov\)](https://www.schuylkill.gov/health/communicable-diseases/mosquitoes)

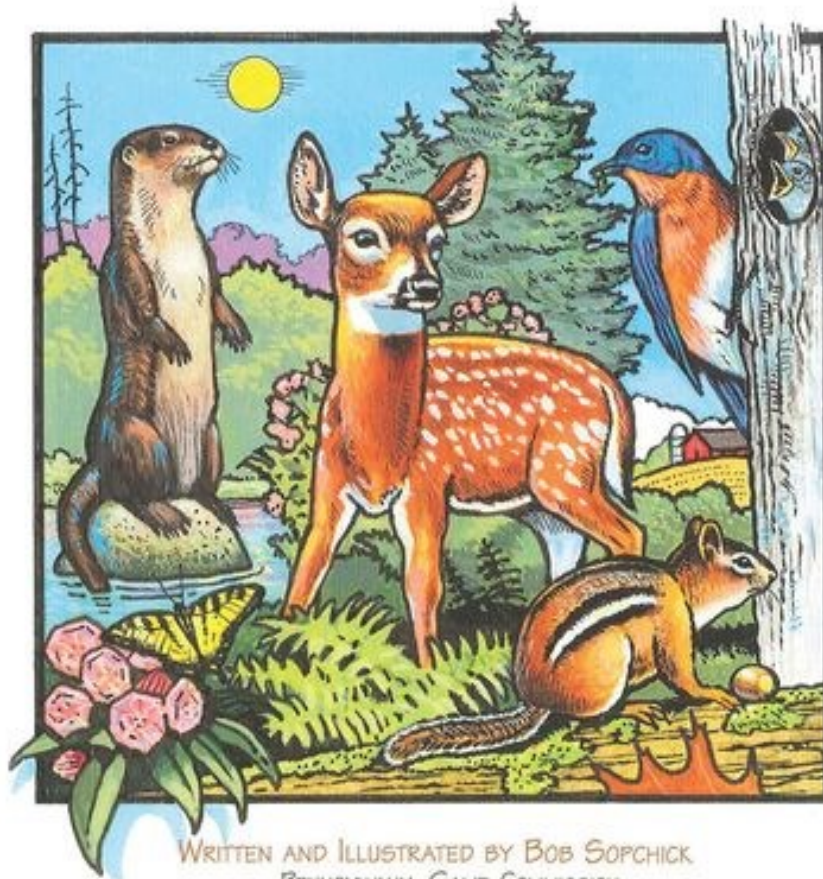
REPUBLICAN HERALD

P E N N S Y L V A N I A



WILDLIFE

STUDENT GUIDE



WRITTEN AND ILLUSTRATED BY BOB SOPCHICK
PENNSYLVANIA GAME COMMISSION

If you're looking for a wildlife education resource for kids, the Pennsylvania Game Commission's Wildlife Student Guide includes 58 pages of wildlife coloring pages, educational facts, fun activities and more. It is available to download to here → <http://bit.ly/2wnlvnr>.



Schuykill Acts & Impacts program is a weeklong watershed expedition along the 120-miles of the Schuykill River exploring the connections between land-use and water quality. Twelve students from the five counties in the watershed experienced first-hand the impact of human development on water quality through guided tours, fieldwork, water sampling and interactive presentations with policy makers and planners. The program included camping each night and several kayak adventures.

SCENES FROM THE 2024 ACTS & IMPACTS PROGRAM HELD IN MID-JULY



Penn State Extension Hosts 5-Part Woodland Stewardship Webinar Series - Guided Engagement With Your Land Starting Sept. 25

The [Penn State Extension](#) will host a [five-part Woodland Stewardship webinar series](#) Guided Engagement With Your Land on September 25, October 9 and 23 and November 6 and 20 from 7:00 to 8:30 p.m. each day.

In Pennsylvania, private forest landowners own 11.5 million acres (almost 70% of the forests). Yet private lands are not necessarily well managed.

Research shows that Pennsylvania's woodland owners overwhelmingly want to do the right thing when it comes to taking care of their land, but they consider a lack of knowledge and information to be their major stumbling block in that effort.

Although this course focuses on Pennsylvania woods and landowners, much of the information applies to land in other states as well, particularly those in the Northeast.



In this educator-guided course, you will learn about forests and how to take care of them.

Through a combination of educational videos and short readings, you'll gain a solid understanding of what it means to be a woodland steward and ways to apply your new knowledge to your own woodlot.

You will learn practical, hands-on skills, as well as some "big picture" concepts related to woodland management.

You can check your learning with quick, ungraded questions, and download and print the handouts that accompany this course.

In addition, you can interact with fellow learners and instructors through discussion boards.

As you work through this course, you will have the opportunity to build a detailed map of your property.

Educators will be available to coach you during five live discussions. If you miss a live discussion, a recording will be available later.

This course has eight sections. At the end of each section, there is a short quiz. You will need to score 70% or better on these quizzes to earn a certificate of completion.

[Click Here to register and for more information.](#)

Visit the [Penn State Extension](#) website to learn more about other educational opportunities.

Master Gardeners of Schuylkill County
schuylkillmg@psu.edu 570.622.4225 ext. 23

“From the Greenhouse Column” by Master Gardener Tom Reed

Ahhh, summer! Yes, what a summer, we are holding in the 90’s, humid, windy, and no rain and exceedingly difficult for the growing season! Hopefully, the weather will cooperate to relieve us of daily watering chores.

Another problem is that most vegetables require an inch of water a week. That is a lot of watering in a large garden dragging hoses or buckets. If you do container gardening watering twice or several times a day will be required. In a container garden, you must keep an eye on nutrients due to constant watering flushing the nutrients out of the potting mix.

To add to plant’s stress when we are hot and dry like this, there is increased pressure from insects. Recently, I noticed various stages of Colorado potato beetle on my eggplants and tomatoes. Look closely at your tomato plants, we have had calls on tomato hornworms.

On melons and squash, I’ve seen squash bugs. Look under the leaves for egg masses and crush them. The cucumber beetles are also highly active, they can transmit bacterial wilt to your plants and infect them with one bite. The squash vine borer has also made the scene and they can attack both summer and winter squash.

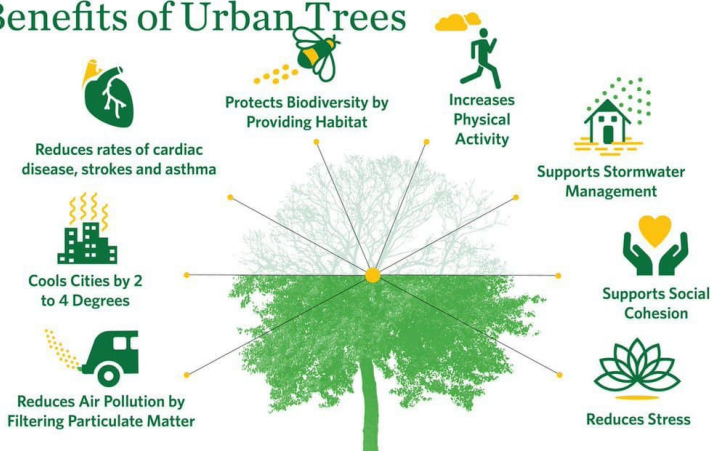
If the above problems are not bad enough, there are deer, rabbits, groundhogs, chipmunks, and squirrels that love to garden also. Those challenges always make best stories. The fence to supposed to keep them out but it just raises their competitive spirit on how to get in!

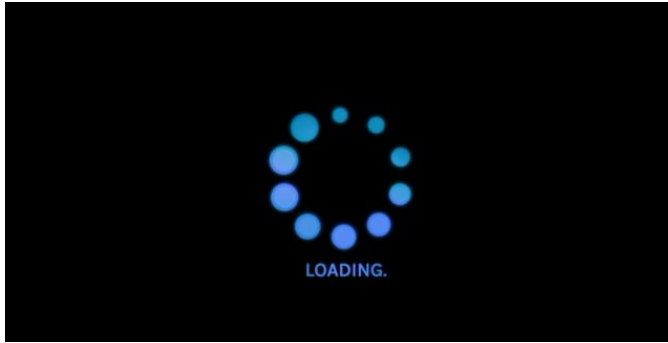
All the above are part of gardening in Schuylkill County. You must deal with it using Integrated Pest Management (IPM). Using to the least toxic (hand picking), repellants, then proceed to a more aggressive treatment or live with the problem. If using a pesticide read and follow the label!

Home concoctions are not the way to go. Dawn dishwashing soap is not a pesticide!



Benefits of Urban Trees





CLICKWORTHY VIDEOS FOR YOU TO VIEW!

- Smokey Bear turns 80 PSA <https://youtu.be/dqyLSaKvWtQ?si=OraqUZje2isdsK5g>
- PA Fish & Boat Commission “What Makes a Fish a Fish” <https://youtu.be/HOY1XCzYPSU?si=Ct4UzuONIQYehRF>
- Wandering Woodsman “Mulberries—Edible and Medicinal Plants of PA” <https://youtu.be/H82AIo1THxs?si=E6TpF6VA3cMiuVqb>
- Explore Schuylkill “Fossil Hunting in Swatara State Park” <https://youtu.be/cMXnDkDNtp8?si=7re9L7ozJERzsA6e>
- Explore Schuylkill “Covered Bridges of Schuylkill County” <https://youtu.be/6ytWeLyGU4I?si=42DCOxLroBtQINHL>
- Schuylkill River Headwaters, Native Brook Trout <https://youtu.be/sapiJ7CNe1I?si=xL129H-FuQk-w1mc>

Schuylkill Conservation District Board and Staff

BOARD OF DIRECTORS

- District Chair:
Scott Graver
- Vice Chair:
Dennis Daubert
- Directors:
Commissioner Gary Hess
Stanley Fidler
Glenn Luckenbill
Dottie Sterner
Eric Leiby
Glenn Hetherington
Russell Wagner

ASSOCIATE DIRECTORS

- Chris Bentz
- Robert Carl, Jr.
- Frank Zukas
- Mike Begis
- Dr. Aaron Clauser
- Mandy Fitzpatrick
- Jason Jenkins
- Jerry Bowman

STAFF PHONE EXTENSIONS FOR 570.622.3742

- Jenna St. Clair, District Manager, 3335
- Martie Hetherington, Agricultural Project Coordinator, 3328
- “Porcupine Pat” McKinney, Environmental Educator, 3326
- Melissa Seigfried, Office Administrator, 3324
- Stephanie Lubinsky, Conservation Program Technician, 3329
- Janelle Wilde, Soil Conservation Coordinator, 3327
- Wayne Lehman, County Natural Resources Specialist, 3333
- Kelse Brown, Agricultural Conservation Technician, 3325
- Valerie Sleva, Soil Conservation Technician, 3330
- Alexa Smith, Watershed Program Technician, 3336
- Kyle Schutt, Insect Management Technician, 3316
- Vacant, Environmental Education and Outreach Coordinator



Sweet Arrow Lake County Park hosts a wide variety of programming for many audiences. Check out their website to see the latest in what is happening! Click below:

[Events & Programs](#)

